



WOODBINE MOHAWK PARK OPERATING & RACING SAFELY

April 1, 2021



Current Situation – Not Permitted to Race during Grey Lockdown

Ontario 



français

 MENU

[Home](#) > [COVID-19](#)

COVID-19 response framework: keeping Ontario safe and open

Grey – Lockdown



Horse racing

- Training only, no races
- No spectators

WE CREATE WINNING EXPERIENCES



WOODBINE™

Request to Safely Operate Live Racing during 'Grey' Lockdown

The Request

- To be permitted to safely operate live racing without spectators during a 'Grey' Lockdown situation.

Premier Doug Ford has informed Woodbine Entertainment that he will allow for live racing without spectators in a 'Grey' Lockdown situation if the regional health authority is in agreement.

Background

- Since June 5, 2020, with the exception of December 26, 2020 to February 17, 2021 when racing was suspended, we have been safely operating racing 4-5 nights a week without any on-site transmission of the virus.
- Woodbine Mohawk Park operates in the Halton Region which, along with the entire Province, is moving to the 'Grey' Lockdown Zone of the Provincial Government's COVID-19 Response Framework as of Saturday, April 3.
- Currently, the measures of the 'Grey' Lockdown Zone allow for the training of horses, but not live racing without spectators.
- Suspending racing again will have severe immediate and long-term impacts to the horse racing industry which will affect tens of thousands of people across the province.

Woodbine Mohawk Park



- Located in Milton, Ontario in the Halton Region.
- 434-acre property.
- Main grandstand building is 361,000 square feet and has two floors.
- Open-air paddock, used for racing, is 55,800 square feet

Grandstand Building – Woodbine Mohawk Park

- We maintain very limited and restricted access into our 361,000 square foot grandstand building.
- All personnel are required to be screened at an outdoor security booth, which includes a forehead temperature check, verification of inclusion being on the essential list, and satisfactory responses to the COVID-19 screening questionnaire.
- There is one dedicated entry door into the building, with a dedicated and separate exit door.
- Through our enhanced cleaning program, all washrooms are cleaned and disinfected at least every 2 hours during racing.
- Enhanced ventilation practices throughout the grandstand building
 - Paddock and opening of all shutters on live race days.
 - Increased fresh air through automated building controls.
 - Merv-13 filters installed at all units and monitored and replaced regularly.
- All areas throughout the building have defined and posted occupancy limits which includes all rooms and workspaces.
- Mandatory face mask policy for all personnel on-site, including in all outdoor areas.
- All administrative areas for employees are closed.
- A focus on enhanced hand hygiene practices including signage and sanitizer.
- All spectator areas including wagering areas, concessions, seating, and food and beverage areas in the grandstand building are all closed.
- Elements Mohawk Casino is closed.

Open-Air Paddock – Woodbine Mohawk Park



- Access to the 55,800 square foot Paddock at Woodbine Mohawk Park is highly restricted to essential personnel only (1 Trainer and 1 Groom per horse). Dedicated entry and exit doors.
 - On average we permit no more than 80 racing personnel to be present in the paddock at any given time during live racing.
 - Trainers and their employees, and Drivers, are only permitted on-site when they have a horse(s) racing and are limited on when they can arrive and must leave within 30 minutes of their last race.
- The paddock has 150 spacious stalls, but we only use 100 to maximize physical distancing.
 - All auxiliary common areas (like showers, lounges and cafeteria) are closed.
 - Drivers and Trainers must change into their driving suits in designated areas to ensure physical distancing.
 - At the conclusion of every race, high-touch surfaces are thoroughly disinfected specific to the areas used during live racing including the open-air paddock and have expanded to now use it in other areas of the building. All items used by the trainer and groom are removed immediately after each race, prior to cleaning.
 - Increased frequency of cleaning and disinfection with special care to high-touched surfaces, including but not limited to, door handles, elevator buttons, washroom fixtures, paddock stalls, hand railing, etc.
 - All washrooms in the paddock are cleaned and disinfected frequently throughout the racing evening.
 - Additional hand sanitizers stations placed throughout paddock.

Physical Distancing Awareness & Enforcement

Woodbine Entertainment has deployed signage throughout the paddock and property to ensure COVID-19 Prevention Protocols and Physical Distancing are being followed. This includes:

- Site-wide mandatory mask policy signage;
- Floor decals to denote physical distancing requirements;
- Frequent posted visuals reminders that reinforce the importance of physical distancing, PPE, and hygiene;
- Signage to denote strict capacity/occupancy limits;
- The removal of seating and altering areas to prevent gatherings in common areas to maintain physical distancing.

In addition to a robust signage program, we have dedicated security personnel who monitor and enforce all COVID-19 Prevention Protocols on race days.



Live Racing without Spectators

- Race nights on Monday, Thursday, Friday and Saturday evenings from 7 p.m. to 11 p.m. (horses start to arrive at 5:30 p.m., with staggered arrival and departure times).
- Approximately 58 essential personnel required on-site to safely operate live racing.
 - 21 of these Woodbine and regulatory personnel work throughout the 361,000 square foot grandstand building.
 - 22 of these essential personnel work throughout the 55,800 open-air paddock.
 - 15 of these essential personnel work outdoors throughout the 434-acre property.
- There are never more than approximately 80 racing participants on-site at one time during live racing.
 - Throughout a race card, a total of approximately 200 racing participants will access the property. All of them have restricted arrival and departure times to ensure that no more than 80 racing participants on-site at one time.
 - 20 athletes (drivers) are on on-site and primarily outdoors with limited access to the paddock.
- All personnel accessing the site are required to go through COVID-19 screening which includes a forehead temperature check.
- Masks/face coverings are mandatory for all personnel while on-site, including when outdoors. Drivers are permitted to remove their mask during a race, but many still wear a mask while racing.
- During pre-COVID-19 environment, hundreds of employees would typically be working on the property. However, in order to operate as safely as possible, the vast majority of these employees are working remotely and have been since March 2020.

Additional COVID-19 Safety Measures on Live Racing Days

Access

- On race days, 21 essential personnel are provided access to the 361,000 square foot Grandstand Building and an additional 22 are provided access to the 55,800 square foot open-air paddock, with another 15 essential personnel working outdoors on the 434-acre property.
- Defined enforcement protocols that include severe penalties for any essential personnel who are observed not following the strict rules.
- Enforcement measures include fines, temporary suspension, and permanent suspension/termination in extreme cases.
- On race day, each horse can only be accompanied by one trainer and one groom (wearing mandatory mask/face-covering) when they enter the open-air paddock. They have specific and restricted arrival times based on the time they race and must leave 30 minutes after their last race.
- Added 3 new changing areas (for a total of 5) for the drivers (pre-COVID environment there were only 2) to give as much separation as possible.

Enhanced Cleaning Procedures

- Through our enhanced cleaning program, all high-touch surfaces are disinfected frequently throughout the racing evening.
- At the conclusion of every race, high-touch surfaces are disinfected specific to the areas used during live racing including the open-air paddock and have expanded to now use it in other areas of the building. All items used by the trainer and groom are removed immediately after each race, prior to cleaning.
- All items used by the trainer and groom are removed immediately after each race, prior to cleaning.
- All washrooms are cleaned and disinfected at least every 2 hours.
- Additional hand sanitizers stations placed throughout building and property.

Security

- Additional security are scheduled on race days, for a total of 7 security guards on-site. Each security guard is assigned to dedicated areas for the purpose of access control, monitoring and enforcement of all COVID-19 Prevention Protocols.
- A dedicated security investigator in the surveillance operation centre is assigned the responsibility of monitoring all race day activity in the Grandstand Building for the purpose of access control, monitoring and enforcement of all COVID-19 Prevention Protocols. They are in regular communication with security officers across the property.

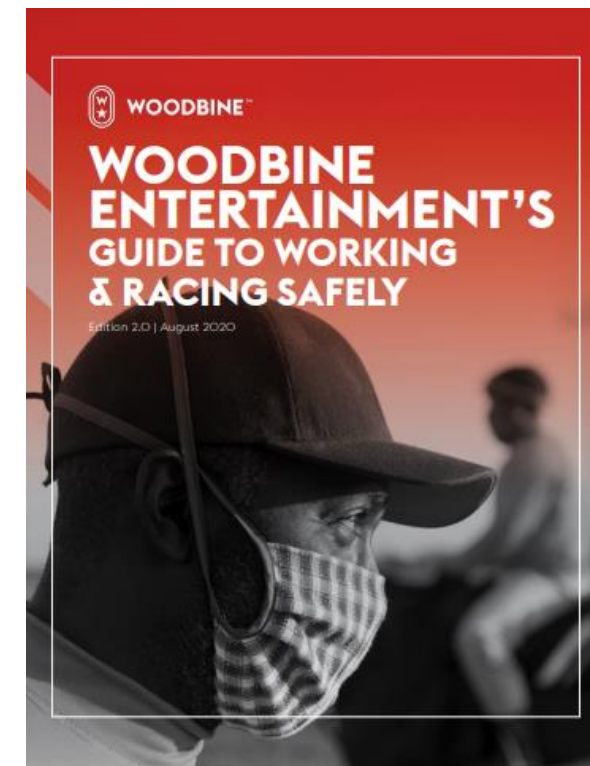
Commitment to Safety – Our Track Record

2,646

Races Operated Since June '20

0

Cases of On-Site Transmission of Virus

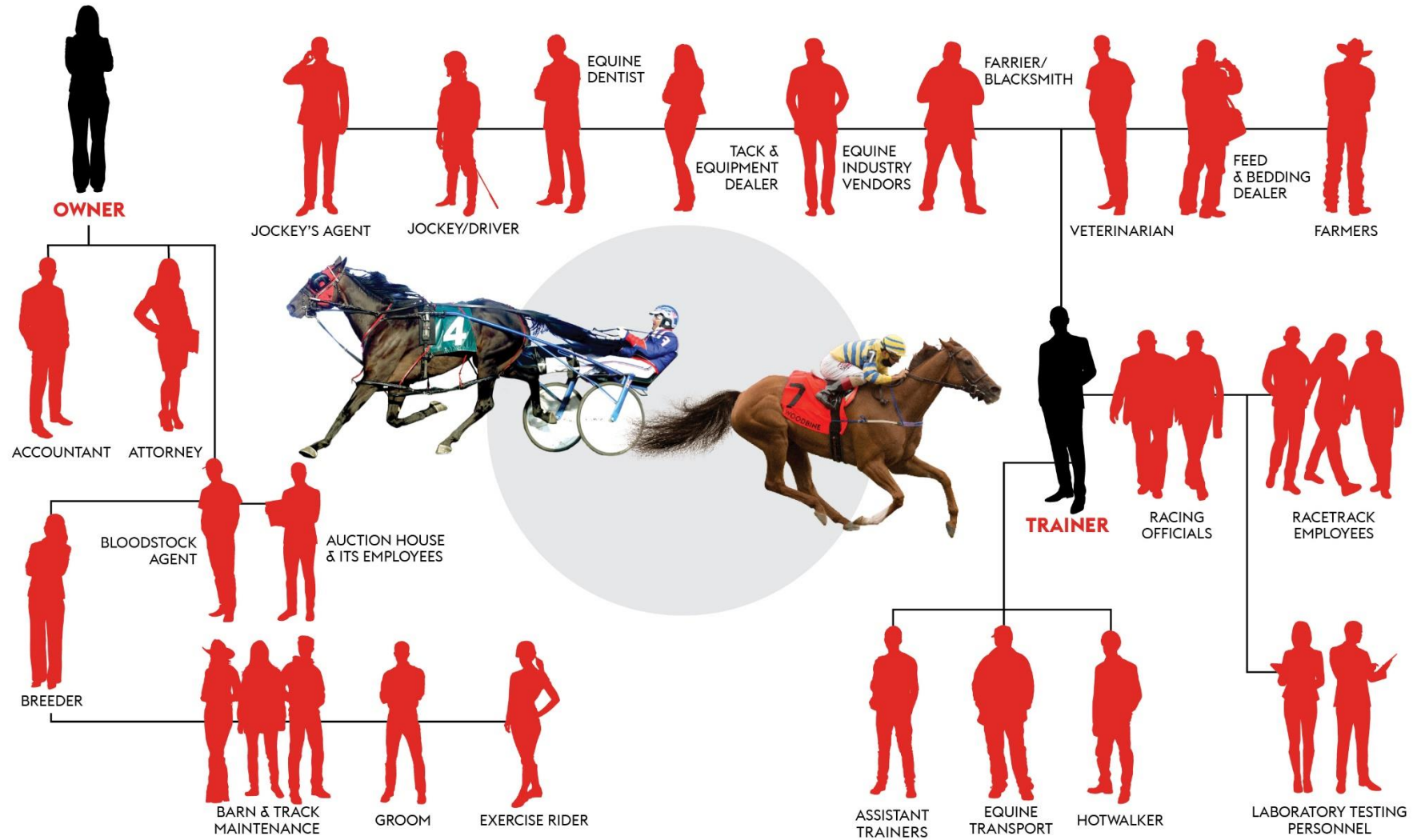


As part of our commitment to safety, last year we published [Woodbine Entertainment's Guide to Working & Racing Safely](#).



HOW MANY PEOPLE ARE EMPLOYED BY ONE RACEHORSE IN ONTARIO?

Here are a few of the people employed by a single race horse in Ontario.



WE CREATE WINNING EXPERIENCES



WOODBINE™